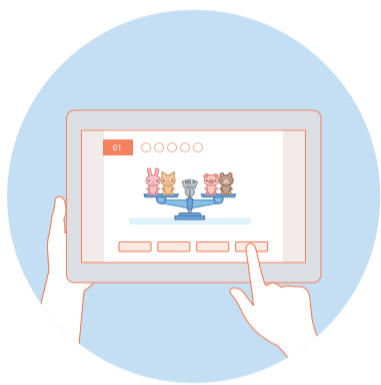


Meet the World Through Math



GLOBAL MATH CHALLENGE

3 great reasons why GMC for School is right for you.



Challenge your true mathematical creativity

GMC asks you to combine both your intelligence & intuition with beautifully presented questions devised by the Japan Prime Math Olympic Committee.



Compete with math lovers worldwide

Everybody can equally compete in math. It's the same language worldwide, with no cultural or national boundaries. Challenge yourself and measure your skill against math fans worldwide.



Take thinking skills to the next level

The GMC 5 Thinking Strategies will give you unique insights into your thinking process. By reviewing the analysis together, encourage your students fresh approaches to see what difference a new perspective makes.

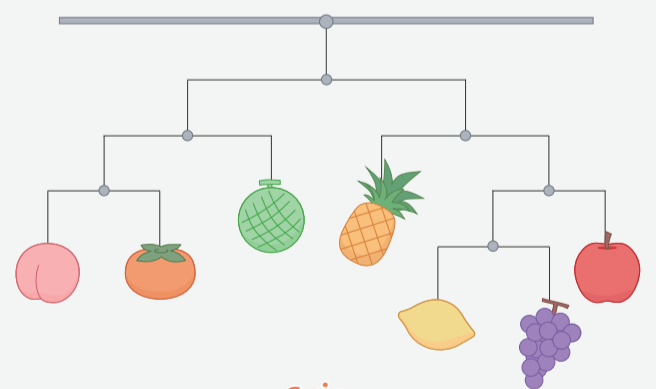
Mini Math Challenge

A Bunch of Grapes

There are some fruits hanging on a pole: a bunch of grapes, a peach, a persimmon, a melon, a pineapple, an apple and a lemon. They weigh 144 g in total and are balanced as shown below.

How much does the bunch of grapes weigh?

Check your answer here: www.global-math.com/pr/quiz/8



WHEN

WHERE



"Full of fun questions for all. Give it a go!"

For ages: Selection of 4 courses according to age.
Format: Online math test. Runs on most modern browsers, tablet, PC or Mac.

Supported by: The Japan Prime Math Olympic Committee
Organized by: Sony Global Education, Inc.
Social: [facebook.com/globalmathchallenge](https://www.facebook.com/globalmathchallenge)
twitter.com/global_math

For more detailed information on the School Plan, please visit: <https://www.global-math.com>